



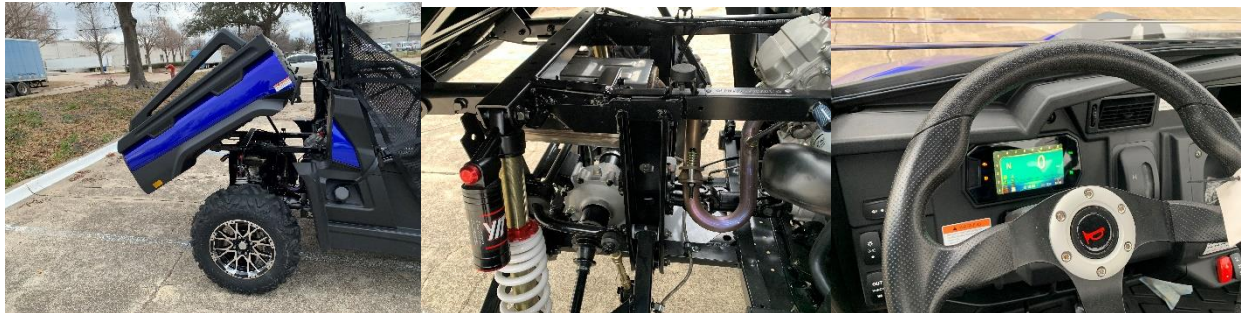
Panther 550



BV Powersports/TrailMaster is excited to announce a new side by side: Panther 550! The Panther 550 is a significant bigger than Taurus 450U UTV both in physical size and engine size.

The Panther 550 is a utility side by side equipped with a 34 HP water cooled high performance 498cc engine with (EFI) electronic fuel injection and internal reverse set up. It comes with on demand 2WD/4WD with locking differential, also with a H/L gear. It is also equipped with 4 wheel independent suspension for optimal driving experience. 3000-lbs-winch comes standard for the heavy towing ability.

Other features: Hard top, Windshield, Side Nets, Bench seat, Cup holder, Large storage space under seat, Digital speed/odometer, LED Hi/Lo beam head light, Center&side mirrors, , Turn signals, Safety harness seatbelt, Big off-road tires, Aluminum wheels, Adjustable shock absorbers, Rack&pinion steering, Hydraulic disc brakes, Large gas tank, 12v power outlet, Horn



We have this model in red, blue, green, and camo





Panther 550

Engine Information

- EPA Certificated
- Engine Type: 4-stroke, single cylinder, liquid cooled
- Displacement: 498.6cc
- Compression Ratio: 10.2:1
- Max HP: 34HP
- Bore & Stroke: 92(mm) & 75(mm)
- Max Power and Crankshaft Speed: 24/6300kW/r/min
- Max Speed: 50mph
- Climbing Ability: 30 degrees
- Ignition: ECU
- Fuel System: EFI
- Starting System: Electric
- Battery: 12V 30Ah
- Engine Oil: SAE 15W/40

General Information

- Transmission: Automatic, L-H-N-R, with locking differential
- Drive Train: Shaft Drive; 2WD-4 WD: Disc
- Drive Mode: Four Wheel Drive, Front and Rear differential with lock
- Suspension, F / R: Front MacPherson, Rear Dual A-ARM
- Tires, F / R: 26 x 9-14 / 26 x 11-14
- Brakes, F / R: Both hydraulic brakes, Fuel Tank Capacity: 7.93 gallons
- Wheels: Aluminum
- Weight, N.W.: 1386 lbs
- Max Load: 1000 lbs
- Dump Bed Capacity: 550 lbs
- Towing Capacity: 820 lbs

Dimension Information

- Wheelbase: 74" (to seat)
- OA L x W x H: 120.6"x63.7"x80.7"
- Seat Height: 18.9" (From floor board)
- Min Ground Clearance: 11.4"
- Bump Bed Size: 48"x36.4"x11.8"

Configurations And Specifications Subject To Change Without Notice. "BV POWERSPORTS, LLC"



TrailMaster

Panther 550 - Key features:

- Hard top
- 3000 lbs-winch
- Windshield
- Side Nets
- Four Wheel Drive, Front and Rear differential with lock
- Liquid cooled high performance 498.6 cc 34 HP engine, with max power 24Kw
- Equipped with H/L gear, can climb up to 30 degree slopes with ease with full capacity
- Bench seat can fit up to 3 persons
- Flip cup holder
- Large storage space under seat
- Four-wheel independent suspension for much better driving experience
- EFI
- Digital speedometer/odometer
- LED Hi/Lo beam head light
- Rear view center and side mirrors
- Sporting steering wheel
- Turn signals
- Safety harness seatbelt
- Big off-road tires: F / R: 26 x9-14 / 26 x 11-14
- Polished aluminum wheels
- Front bumper
- Adjustable heavy duty front and rear shock absorber
- Rack and pinion steering wheel
- Front and rear hydraulic disc brake
- Large gas tank
- 12v power outlet
- Horn